



# GAT MONTHLY MEMBERSHIP PROGRESS REPORT

Results as of: 6/30/2023

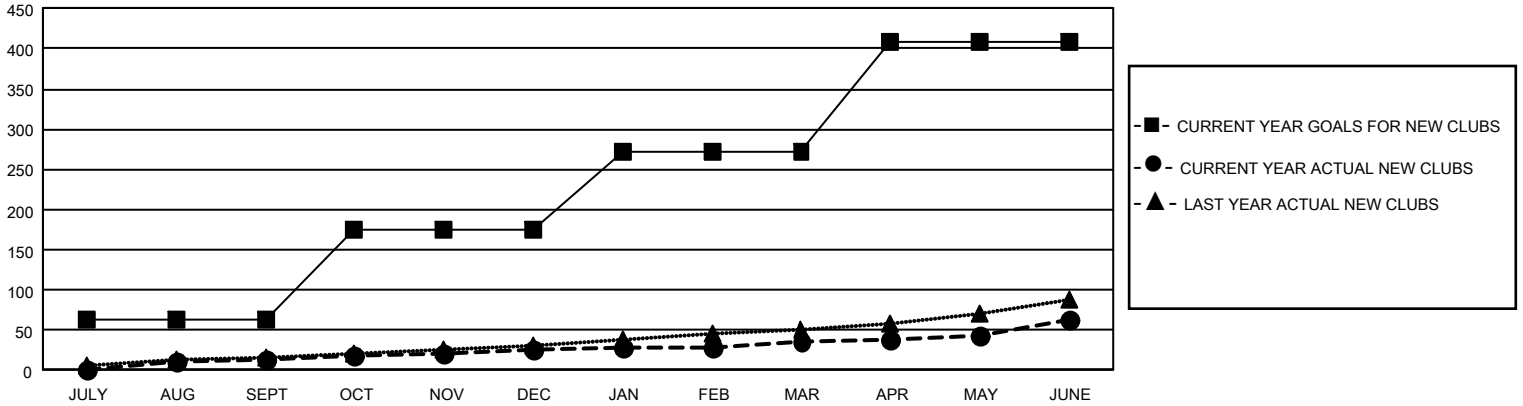
## GAT Constitutional Area 1

REPORT DOES NOT INCLUDE CLUBS IN UNDISTRICTED AREAS.

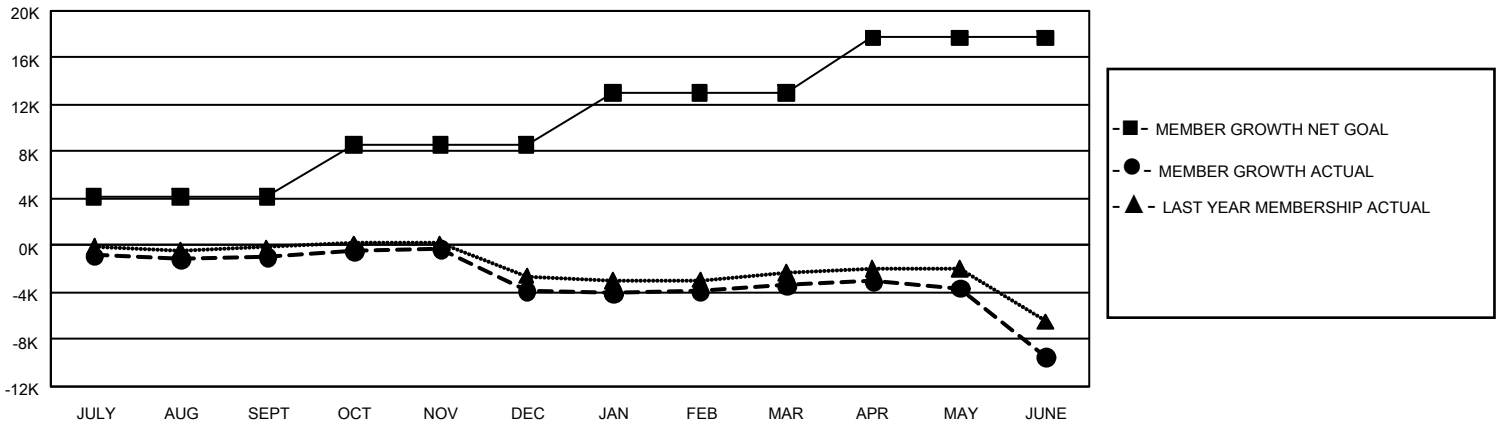
Clubs			
RESULTS FOR 2022-2023			
QUARTER	NEW CLUB GOAL	NEW CLUBS	DROPPED CLUBS
JULY/AUG/SEPT	192	14	64
OCT/NOV/DEC	330	11	111
JAN/FEB/MAR	294	10	45
APR/MAY/JUNE	411	29	159

Members			
RESULTS FOR 2022-2023			
QUARTER	MEMBER GROWTH NET GOAL	MEMBER GROWTH ACTUAL	DROPPED MEMBERS ACTUAL (including transfers)
JULY/AUG/SEPT	4133	7,255	7,310
OCT/NOV/DEC	4409	7,153	9,400
JAN/FEB/MAR	4451	8,147	6,704
APR/MAY/JUNE	4727	9,063	14,091

GOALS AND ACTUAL NEW CLUBS CUMULATIVE



GOALS AND ACTUAL MEMBERS CUMULATIVE



<b>DROPPED CLUBS: 379</b>	6,351 CLUBS OF 10,412 ADDED 1 OR MORE NEW MEMBERS  <a href="#">CLICK HERE FOR CUMULATIVE MEMBERSHIP DATA</a>	<b>GENDER DISTRIBUTION</b>	
		MALE 169,556 (64.00%) FEMALE 95,265 (35.96%) NON BINARY 10 (0.00%) PREFER NOT TO ANSWER 114 (0.04%)	TOTAL FAMILY UNIT MEMBERS 51,155 FAMILY MEMBERS PAYING HALF DUES 26,323
<b>DROPPED MEMBERS</b>			
DECEASED 4,637 CLUB CANCELLED 2,451 OTHER 30,424 <b>TOTAL 37,512</b>			